

# Analogue to digital – 24 hour

1 What is the same and what is different about the clocks in each set?

a)

b)

2 Write the times in 12-hour digital format using am or pm.

24-hour digital	12-hour digital
06:10	
18:10	
21:12	
12:45	
00:45	

3

23:30  $\xrightarrow{\text{Take away 12 hours}}$  11:30

To change from 24-hour to 12-hour digital time, you just have to subtract 12 from the hours.

Does Amir's method always work? \_\_\_\_\_  
Explain your reasons.

4 The time is 6:47 pm.  
Dexter, Alex and Mo are using number lines to work out what time it will be in 2 hours and 36 minutes.

Fill in the missing times in 24-hour format.

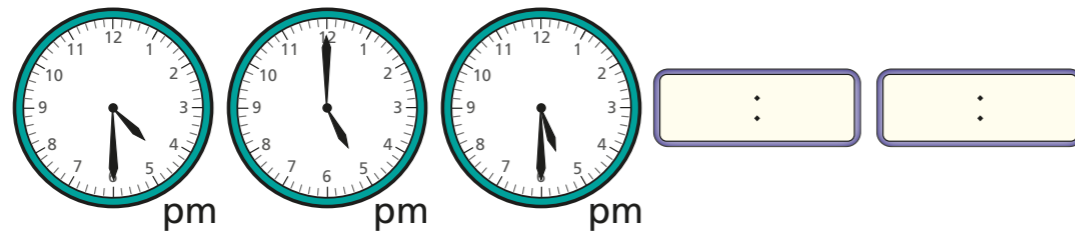
Dexter


Alex

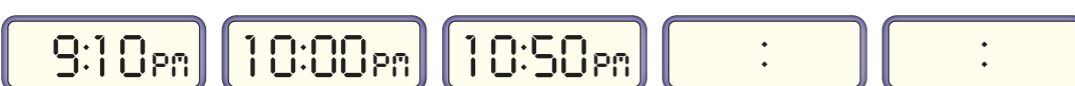
Mo

Whose method do you prefer?

5 Complete the sequences by writing the next two times in 24-hour digital format.

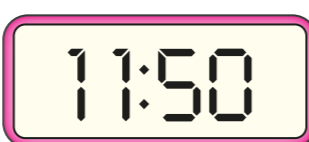
a) 

b) 

c) 

6 Nijah is delivering a parcel to her friend's house.

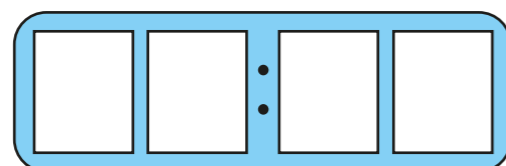
She leaves her house at  am.

She arrives at her friend's house at 

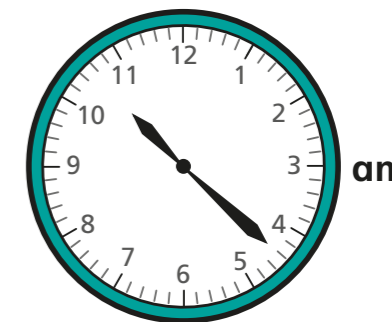
She leaves her friend's house at 11:55

If her return journey takes the same amount of time, what time will it be when she gets home?

Write your answer in 24-hour digital format.



7 Whitney thinks the time is 22:10. What mistake has Whitney made?



8 

Using the digit cards once only each time, write five different times that can be shown on the 24-hour clock.

---



---

Compare answers with a partner.

9 The time 15:51 is palindromic.

If you write the digits forwards or backwards the time will be the same.

Write five other times in the 24-hour digital format that are palindromic.

---



---

Compare answers with a partner.