

Weekly Tasks/Activities for Home Learning

Week beginning: Monday 22nd June 2020

Hello Year 6,

As it is the final half term of this academic year, we are challenging you to explore how much you can remember about each topic. Therefore, every week, we will revisit one of the exciting topics we have learnt about this year.

Our revision topic this week will be our learning from Autumn 2. Our topic was: WW2



Y	Maths	Literacy	Topic	Active/ Mindfulness
---	-------	----------	-------	---------------------

6 Daily maths activities will be set on PurpleMash, with further challenge. However, you can complete other maths activities on **My Maths**:

Monday – Division of 4 digit by 1


Use place value counters to work out $8,407 \div 4$

Th	H	T	O

8,407 ÷ 4 = remainder

Tuesday- Reasoning about division

There are 459 children in a school.
They are sitting at tables in groups of 7



Do you agree with Mo? _____
Explain your answer.

Spellings

This week we are looking at the words with the suffix -ation

Focus: The suffix -ation is added to verbs to form nouns.

	A	B
1	adoration	initiation
2	estimation	compilation
3	evacuation	corporation
4	preparation	lamination
5	admiration	abdication
6	association	dehydration
7	destination	aggravation
8	humiliation	immigration
9	irritation	discrimination
10	hibernation	abomination

Practise writing these words in your best handwriting, then ask a parent or a sibling to help you learn them.

Challenge: Can you use any of these words in a sentence?

Grammar

This week's focus is on verb sentence which are often a good device when improving your writing. This includes: -ing starters and -ed staters.

As you read your home reading book find evidence of

1) **WW2 timeline**

*Do you remember the cause that led to WW2?
Can you imagine what life was like for the German soldiers who lost the first war and were forced to pay reparation of 4 million towards the war effects?*

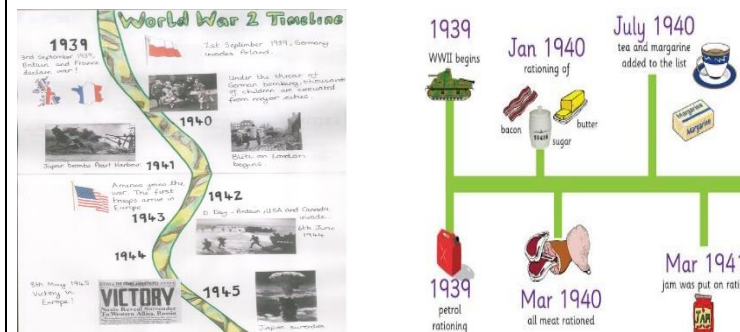
Do you wonder what life would be like if Hitler wasn't appointed as a chancellor in 1933 that led to another world war?

Why not refresh your memory by creating a timeline to show key events that occurred before World War 2 was declared by Neville Chamberlain on 3rd September 1939.

MUST – Have key events including the historical dates in chronological order.

SHOULD – Include specific details about the events and the persons involved.

CHALLENGE – Write a set of questions for people to answer using your timeline.



The image shows two related visual aids. On the left is a 'World War 2 Timeline' with key events: 1939 (WWII begins), 1940 (Britain becomes a democracy), 1941 (Pearl Harbor), 1942 (D-Day), 1943 (Atomic bomb), 1944 (D-Day), 1945 (Victory in Europe). On the right is a 'Rationing Mat' showing items rationed in 1939 (petrol), 1940 (bacon, sugar, butter, all meat), and 1941 (tea and margarine, jam).

Art and Design

Draw, paint or construct a World War 2 Artefact. This might be a WW2 plane, WW2 shelter or WW2 gas mask.

MUST –Think carefully about the size and dimensions of the artefact.

SHOULD – Consider the characteristic design of an artefact.

CHALLENGE – Write 3 facts about the artefact.

Active:

Roll and dice and follow the instruction shown by the this mat

Wednesday-

Write the calculations in the correct column of the table.

$5,066 \div 4$	$9,513 \div 4$	$1,234 \div 4$
$6,562 \div 4$	$6,563 \div 4$	$9,515 \div 4$

Remainder of 1	Remainder of 2	Remainder of 3	Remainder of 4

Are any columns empty? Talk to a partner about why this has happened.

Always, Sometimes, Never?

A three-digit number made of consecutive descending digits divided by the next descending digit always has a remainder of 1

$765 \div 4 = 191 \text{ remainder } 1$

How many possible examples can you find?

Thursday- long division

Verbs
can make interesting sentence starters

Jumping with joy I ran home to tell my Mum the good news.

Stomping along the path came the dinosaurs.

Leaping through the air the wolf caught his prey.

Zooming cars sped through the countryside.

Crawling bugs climbed up the cracked wall.

Gripping my camera tightly I climbed the stairs.

All activities have been set on **Literacyplanet.com** and **Purple mash**

Please login to complete the activity.

Reading

Daily reading activities and comprehension are available on PurpleMash. Please remember to read the chapter book first before completing the comprehension. This week

Experiment on various ways to draw your timeline

2) **Axis and Allies**

Every war has an allied and axis powers, and each time has a leader that manages to rally everyone to join their sides.

**So what are the qualities of a leader?
What skills do they need to possess?**

Created a wanted poster for a leader.



It could be leader in a of an axis of an allied power, a leader in a dance group, a leader/coach in a football team or a leader in your friendship group... the choice is

SUPERHERO DICE FITNESS

To be HEALTHY for a lifetime, it's important to get 60 Minutes of physical activity every day! Play Super Hero Dice Fitness every day. Roll the dice, perform the exercise that matches the number rolled. Start with 5's for each exercise and increase the number of repetitions you do every day for each exercise.

Follow the links below to find different exercise activities you can complete:

Just Dance
<https://www.youtube.com/channel/UCOVIhde7N5uGDIFXXWWEbFQ>

Cosmic Kid's yoga
<https://www.youtube.com/user/CosmicKidsYoga>

Check out this website and have a look at the **PE Home Learning** and **60 Second Challenges:**

1) Use your knowledge of multiples to help you calculate the answer to these long division questions:



- a) $3785 \div 15 =$ b) $1486 \div 21 =$
c) $2568 \div 28 =$ d) $4365 \div 35 =$

2) Solve these division word problems. Think carefully about the effect the remainder will have on your final answer.

- a) A coach can carry 35 supporters to a football match. How many coaches will be needed in order to carry 4050 supporters?



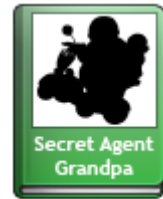
- b) A factory is packing boxes of books. Each box can hold 26 books. How many full boxes will the factory have after packing 3410 books?



- c) A school needs 2780 cartons of orange juice for the canteen. There are 18 cartons of juice in each box. How many boxes of juice will they need to order?



you will be reading the book...



So, get cracking!

GetEpic is becoming more and more popular. Read continue to read and if you still don't have a login please call the school with your email address and you will be added.

Writing:

Use the given writing prompt to write a mysterious story that ends up at **The Cave**. Remember to include all the different writing strategies including:

- different sentence starters
- a range of sentence types
- the use of different figurative language including similes, metaphors,

yours. Write down all the necessary qualities required of a leader.

Use the characteristic or the qualities that the leaders in WW2 such as Hitler from Germany, Churchill from Britain, Roosevelt from the USA or Stalin from Russian possessed.

3) Science

During the Autumn term, we compared living and non-living things. We came up with the seven life processes which characterise living things. Do you remember what they were? Here is another acronym to remind you. Mrs Gren. Choose a living creature and use the acronym Mrs Gren to describe how you know that your creature it alive. Remember, living things could be either plants or animals.



- 4) **Science:** How does electricity get into our homes? Use this flow diagram to write an explanation on how we get electricity from the power plant to our homes

<https://www.youthsporttrust.org/free-home-learning-resources-primary>

Mindfulness:

This link has some great ideas to look after yourself and others. <https://www.cosmickids.com/mindfulness-activities-kids/>

This pack has some different activities that you can enjoy with your family: <https://www.time-to-change.org.uk/sites/default/files/1-Mindfulness%20activity%20book.pdf>

Friday-Long division Challenge

- 1) Two children have been asked to solve this problem: $2422 \div 14$.



I don't think that there will be a remainder because 2422 will be a multiple of 14 as it is divisible by 2 and 7.

I think that this will leave a remainder because 2422 is not a multiple of 4 or a multiple of 10.



Who is correct? Explain your reasoning.

- 2) Use these division calculations to decide if the statements are always, sometimes or never true. Explain your reasoning.

$4822 \div 22 = \square$ $1176 \div 24 = \square$

$2821 \div 11 = \square$ $1281 \div 21 = \square$

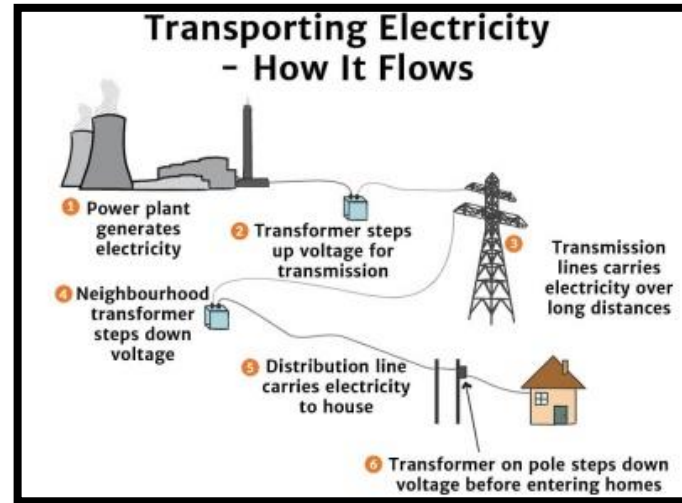
- Even divisors will not leave a remainder when the dividend is even.
- If a number can be divided by a divisor without leaving a remainder, the number is also divisible by all the factors of that divisor.
- Prime number divisors leave a remainder.

personification and onomatopoeia.

The Cave

I walked into the dark, gloomy, damp cave. Everything was silent apart from the slow drip of water above my head. Suddenly the silence was shattered by a loud shriek! What was that?

Task
Your task is to write a short story using this idea to help you.



The Cave

I walked into the dark, gloomy, damp cave. Everything was silent apart from the slow drip of water above my head. Suddenly the silence was shattered by a loud shriek! What was that?



Task

Your task is to write a short story using this idea to help you.

The Cave

How does the story begin?

Setting: Where and when does it happen?

Characters: Who are they? What are they like?

How do you manage to get back home?

How does the story end?