

Book: The Jolly Christmas Postman

By Allan Ahlberg and Janet Ahlberg

<https://www.youtube.com/watch?v=MDVev77huno>

(Topic: Changes)

Phonics

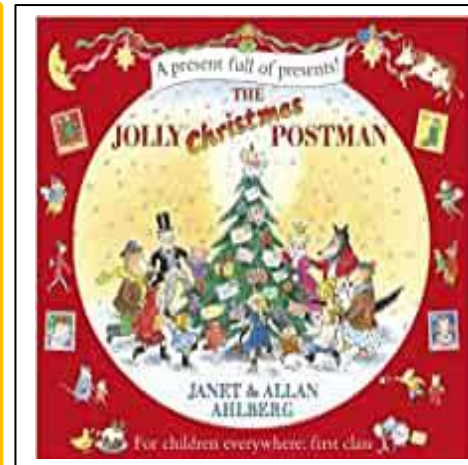
Sounds: **ai ee oo**

<https://www.youtube.com/watch?v=DIpcaxNSU4&safe=active>

High Frequency Words: **my, for, too**

Knowledge and Skills

- Can you write the sounds of the week?
- What is a digraph? (two letters that make one sound)
- Can you read the high frequency words to your grown up? (See above)



Vocabulary

Confidence

Performance

Special

Culture

Choreography

Personal, Social and Emotional Development.

- What happens during Christmas?
- What things might you do during Christmas?
- Who do you see on Christmas day?

Communication and Language

- Watch Santa Claus reading the "The Jolly Christmas Postman" with your adult

<https://www.youtube.com/watch?v=2jQkDsoPFJE>

Can you draw a story map with your grown up about what happens in the story?

Physical Development

- Can you help to wrap up some presents with a family member? Remember to use your scissors correctly. What **materials** will you use?
- Can you go for a walk with your grown up? Can you describe the weather?

Please contact the school office if you require any additional work or resources.

Literacy

- Talk to your child about what a **sentence** is. (Start with a capital letter, remember to use your finger space and don't forget to end your sentence with a full stop).
 - Write a **sentence** about what "**The Jolly Christmas Postman**" is not. (Don't forget to use your phonics sounds).
- Can you talk to your child about what the word **special** may mean?

Maths

- Can you count forwards and backwards from 20?
 - What is the **difference** between winter and summer?
- Can you work out different ways of making number 6? Try to use your **natural** materials to help you to count.
 - Can you write all of your numbers to 10?

Understanding the World

- Can you design a Christmas tree using 3D boxes and cups? What does a Christmas tree look like?



Expressive Arts and Design

- Can you paint or draw a picture of winter?



Please contact the school office if you require any additional work or resources.